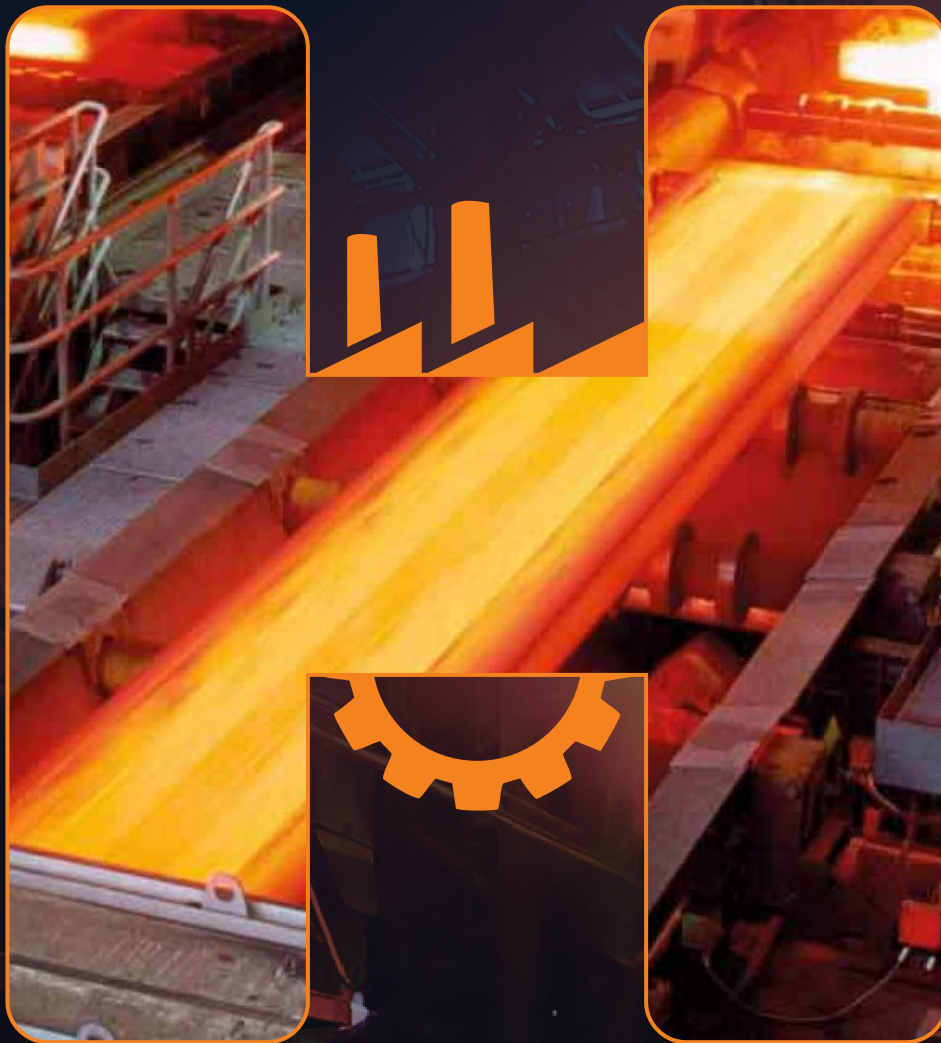


#1 LEADER IN MANUFACTURING & EXPORTING

an extensive range of high quality Industrial Steel Products.



HINDUSTAN STEEL
AND ENGINEERING COMPANY

www.hsec.in

Today, Hindustan Steel and Engineering company is one of the leading Manufacturers, Importers, Exporters and Supplier of all kinds of industrial steel products. The foundations of our business heritage continues to be based on quality, reputation, customer service and performance. The highest emphasis is placed on human resources and deployment of the latest in information technology.

Having begun out of a small set-up, Hindustan Steel and Engineering Company is located in the heart of India's commercial center Mumbai. we have built up adequate stock levels of all essential items within our scope of supply and are in position to offer immediate deliveries. We are a client focused and service oriented group. We are leaders in our field and are involved in manufacturing an extensive range of high quality Semi-finished products (**Rods, Tubes, Buttweld Fittings, Forged Fittings, Flats & Strips, Plates, Wires, Pipes, Sheet and Coils**) for a wide range of engineering industries. We have the capability and flexibility to meet unique product requirements and exact specifications and size.

Managed by a professional board of Directors with years of experience in steel pipe manufacturing, the company employs state of the art machinery to produce high quality flawless range of pipes suitable for multiple applications in various fields. Hindustan Steel and Engineering company endeavours to imbibe and implement the latest technology, plant & Machinery and testing equipment in addition to a vigilant quality control department, resulting in superior products.

INFRASTRUCTURE

Hindustan Steel & Engineering Company has its state-of-the-art manufacturing plant well equipped with all the latest machines and sophisticated testing equipments, we are capable of producing products, which can fulfill different requirements of our clients.

Followings are Machine used in our manufacturing process:

- TIG welding lines
- Cold Pilgering Machine
- Cold Drawing Benches For Seamless
- Bead Rolling Machinery
- Atmosphere controlled heat treatment furnaces;
- Rotatory & Roller Swaging machines
- Coating & Soaping bath
- Tube finishing lines including pickling
- Tube straighteners, end Facing
- Cut-to-length facilities
- Satin finishing, Mirror polishing
- Various destructive and Non-destructive tests.



OUR CORE VALUES

"Quality First" is not an overrated condition, but a concept that has brought achievements to us. Even during difficult terrains in organization's record it proved helpful as compare to future. We are completely devoted to our quality system which we implement & sustain.

Customer & Suppliers Delight :-

We are supported by our suppliers and clients that helps us in achieving success.

Integrity & Commitment :-

Creation of an informal culture gives our employees the freedom to achieve the goals set by the organization.

Responsibility :-

We are totally responsible for the environment we work in and also ensure that what we achieve through our people, we give back that to them also.

PRODUCT RANGE

PIPES & TUBES

Stainless Steel	: 304,304L,304H, 316, 316L, 310, 310S, 904L, 347, 347H, 317L, 410 409, 420, 630 etc.
Duplex Stainless Steel	: 31803, 32205, 32750 etc.
Aluminium	: 2024, 6061, 6063, 6060, 6082 etc.
Nickel & Super Alloys	: Nickel (200/201), Inconel (600/601/625/718), Incoloy (800/800H/800HT/825/DS), Monel (400/405/500), Hastelloy (C22/C276)
Carbon Steel	: ATSM A283, A285, A515, ASTM 516, ASTM A105, ASTM A234, LF1, LF2, ASTM A106, ASTM A333, ASTM A53, API 5L etc.
Alloy Steel	: ASTM A387 Gr.11/22/5/9/91, ASTM A335 Gr. 5/9/11/22/91, 4140, 4145, 4140H, 4145H etc.
Copper & Copper Alloys	: Copper Nickel 90/10, Copper Nickel 70/30, Copper Nickel 80/20), Brass, Bronze, Phosphor Bronze etc.



BUTTWELD FITTINGS

Stainless Steel	: 304,304L,304H, 316, 316L, 310, 310S, 904L, 347, 347H, 317L, 410 409, 420, 630 etc.
Duplex Stainless Steel	: 31803, 32205, 32750 etc.
Aluminium	: 2024, 6061, 6063, 6060, 6082 etc.
Nickel & Super Alloys	: Nickel (200/201), Inconel (600/601/625/718), Incoloy (800/800H/800HT/825/DS), Monel (400/405/500), Hastelloy (C22/C276)
Carbon Steel	: ATSM A283, A285, A515, ASTM 516, ASTM A105, ASTM A234, LF1, LF2, ASTM A106, ASTM A333, ASTM A53, API 5L etc.
Alloy Steel	: ASTM A387 Gr.11/22/5/9/91, ASTM A335 Gr. 5/9/11/22/91, 4140, 4145, 4140H, 4145H etc.
Copper & Copper Alloys	: Copper Nickel 90/10, Copper Nickel 70/30, Copper Nickel 80/20), Brass, Bronze, Phosphor Bronze etc.



FORGED FITTINGS

Stainless Steel	: 304,304L,304H, 316, 316L, 310, 310S, 904L, 347, 347H, 317L, 410 409, 420, 630 etc.
Duplex Stainless Steel	: 31803, 32205, 32750 etc.
Aluminium	: 2024, 6061, 6063, 6060, 6082 etc.
Nickel & Super Alloys	: Nickel (200/201), Inconel (600/601/625/718), Incoloy (800/800H/800HT/825/DS), Monel (400/405/500), Hastelloy (C22/C276)
Carbon Steel	: ATSM A283, A285, A515, ASTM 516, ASTM A105, ASTM A234, LF1, LF2, ASTM A106, ASTM A333, ASTM A53, API 5L etc.
Alloy Steel	: ASTM A387 Gr.11/22/5/9/91, ASTM A335 Gr. 5/9/11/22/91, 4140, 4145, 4140H, 4145H etc.
Copper & Copper Alloys	: Copper Nickel 90/10, Copper Nickel 70/30, Copper Nickel 80/20), Brass, Bronze, Phosphor Bronze etc.



FORGED FLANGES

Stainless Steel	: 304,304L,304H, 316, 316L, 310, 310S, 904L, 347, 347H, 317L, 410 409, 420, 630 etc.
Duplex Stainless Steel	: 31803, 32205, 32750 etc.
Aluminium	: 2024, 6061, 6063, 6060, 6082 etc.
Nickel & Super Alloys	: Nickel (200/201), Inconel (600/601/625/718), Incoloy (800/800H/800HT/825/DS), Monel (400/405/500), Hastelloy (C22/C276)
Carbon Steel	: ATSM A283, A285, A515, ASTM 516, ASTM A105, ASTM A234, LF1, LF2, ASTM A106, ASTM A333, ASTM A53, API 5L etc.
Alloy Steel	: ASTM A387 Gr.11/22/5/9/91, ASTM A335 Gr. 5/9/11/22/91, 4140, 4145, 4140H, 4145H etc.
Copper & Copper Alloys	: Copper Nickel 90/10, Copper Nickel 70/30, Copper Nickel 80/20), Brass, Bronze, Phosphor Bronze etc.



ROUND BARS & RODS

Stainless Steel	: 304,304L,304H, 316, 316L, 310, 310S, 904L, 347, 347H, 317L, 410 409, 420, 630 etc.
Duplex Stainless Steel	: 31803, 32205, 32750 etc.
Aluminium	: 2024, 6061, 6063, 6060, 6082 etc.
Nickel & Super Alloys	: Nickel (200/201), Inconel (600/601/625/718), Incoloy (800/800H/800HT/825/DS), Monel (400/405/500), Hastelloy (C22/C276)
Carbon Steel	: ATSM A283, A285, A515, ASTM 516, ASTM A105, ASTM A234, LF1, LF2, ASTM A106, ASTM A333, ASTM A53, API 5L etc.
Alloy Steel	: ASTM A387 Gr.11/22/5/9/91, ASTM A335 Gr. 5/9/11/22/91, 4140, 4145, 4140H, 4145H etc.
Copper & Copper Alloys	: Copper Nickel 90/10, Copper Nickel 70/30, Copper Nickel 80/20), Brass, Bronze, Phosphor Bronze etc.



SHEETS, PLATES & COILS

Stainless Steel	: 304,304L,304H, 316, 316L, 310, 310S, 904L, 347, 347H, 317L, 410 409, 420, 630 etc.
Duplex Stainless Steel	: 31803, 32205, 32750 etc.
Aluminium	: 2024, 6061, 6063, 6060, 6082 etc.
Nickel & Super Alloys	: Nickel (200/201), Inconel (600/601/625/718), Incoloy (800/800H/800HT/825/DS), Monel (400/405/500), Hastelloy (C22/C276)
Carbon Steel	: ATSM A283, A285, A515, ASTM 516, ASTM A105, ASTM A234, LF1, LF2, ASTM A106, ASTM A333, ASTM A53, API 5L etc.
Alloy Steel	: ASTM A387 Gr.11/22/5/9/91, ASTM A335 Gr. 5/9/11/22/91, 4140, 4145, 4140H, 4145H etc.
Copper & Copper Alloys	: Copper Nickel 90/10, Copper Nickel 70/30, Copper Nickel 80/20), Brass, Bronze, Phosphor Bronze etc.



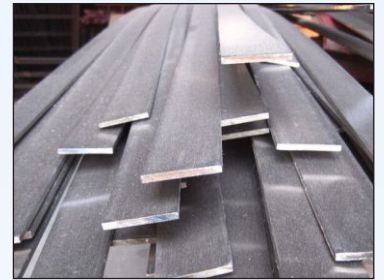
WIRE & WIRE RODS

Stainless Steel	: 304,304L,304H, 316, 316L, 310, 310S, 904L, 347, 347H, 317L, 410 409, 420, 630 etc.
Duplex Stainless Steel	: 31803, 32205, 32750 etc.
Aluminium	: 2024, 6061, 6063, 6060, 6082 etc.
Nickel & Super Alloys	: Nickel (200/201), Inconel (600/601/625/718), Incoloy (800/800H/800HT/825/DS), Monel (400/405/500), Hastelloy (C22/C276)
Carbon Steel	: ATSM A283, A285, A515, ASTM 516, ASTM A105, ASTM A234, LF1, LF2, ASTM A106, ASTM A333, ASTM A53, API 5L etc.
Alloy Steel	: ASTM A387 Gr.11/22/5/9/91, ASTM A335 Gr. 5/9/11/22/91, 4140, 4145, 4140H, 4145H etc.
Copper & Copper Alloys	: Copper Nickel 90/10, Copper Nickel 70/30, Copper Nickel 80/20), Brass, Bronze, Phosphor Bronze etc.



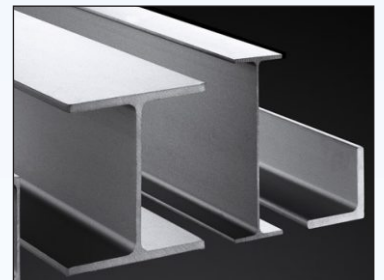
FLAT BARS & STRIPS

Stainless Steel	: 304,304L,304H, 316, 316L, 310, 310S, 904L, 347, 347H, 317L, 410 409, 420, 630 etc.
Duplex Stainless Steel	: 31803, 32205, 32750 etc.
Aluminium	: 2024, 6061, 6063, 6060, 6082 etc.
Nickel & Super Alloys	: Nickel (200/201), Inconel (600/601/625/718), Incoloy (800/800H/800HT/825/DS), Monel (400/405/500), Hastelloy (C22/C276)
Carbon Steel	: ATSM A283, A285, A515, ASTM 516, ASTM A105, ASTM A234, LF1, LF2, ASTM A106, ASTM A333, ASTM A53, API 5L etc.
Alloy Steel	: ASTM A387 Gr.11/22/5/9/91, ASTM A335 Gr. 5/9/11/22/91, 4140, 4145, 4140H, 4145H etc.
Copper & Copper Alloys	: Copper Nickel 90/10, Copper Nickel 70/30, Copper Nickel 80/20), Brass, Bronze, Phosphor Bronze etc.



ANGLES & CHANNELS

Stainless Steel	: 304,304L,304H, 316, 316L, 310, 310S, 904L, 347, 347H, 317L, 410 409, 420, 630 etc.
Duplex Stainless Steel	: 31803, 32205, 32750 etc.
Aluminium	: 2024, 6061, 6063, 6060, 6082 etc.
Nickel & Super Alloys	: Nickel (200/201), Inconel (600/601/625/718), Incoloy (800/800H/800HT/825/DS), Monel (400/405/500), Hastelloy (C22/C276)
Carbon Steel	: ATSM A283, A285, A515, ASTM 516, ASTM A105, ASTM A234, LF1, LF2, ASTM A106, ASTM A333, ASTM A53, API 5L etc.
Alloy Steel	: ASTM A387 Gr.11/22/5/9/91, ASTM A335 Gr. 5/9/11/22/91, 4140, 4145, 4140H, 4145H etc.
Copper & Copper Alloys	: Copper Nickel 90/10, Copper Nickel 70/30, Copper Nickel 80/20), Brass, Bronze, Phosphor Bronze etc.



QUALITY POLICY

We are committed to enhancing its customer's value with product and services that set industry standards for quality and performance. We persistently strive to deliver the best and understand the value of constant improvement –setting goals and objectives throughout the organization to ensure that we are meeting our customer expectations with our products and services.

The well-deserved certification is the result of high and consistent standards of processes, which is reflected in the high quality of the products. We are committed to Total Customer Satisfaction by providing products and services that meet or exceed their expectations through constant improvement of Quality Management Systems.

INDUSTRIES WE SERVE



Petroleum Refinery



Electric Power



Food Processing



Nuclear Industries



Pharmaceutical



Ship Building



Offshore



Sewage Treatment



Paper Mills



Textile Industry



Chemical Industry

In addition to the above mentioned industries, our products are also utilized in following industries :

Automobiles
Heat Exchangers & Condenser
Architectural Application

Chilling Plants
Sugar Mills
Instrumentation

Railways
Thermocouples
Heating Elements

Fertilizer Plants
Submersible Pumps
Water Pipelines



HINDUSTAN STEEL
AND ENGINEERING COMPANY

Manufacturer, Importer, Exporter and Supplier of Industrial Steel Products
for Special & Critical Applications.

Office :

No 3, Banki Nawab Street
S.P Road Cross, Bangalore - 560002

Phone: 080 - 41204092 / 41249148

Mobile : +91-9740762074

Email : info@hsec.in

Web: www.hsec.in